

**SANITARY KEYED PLAN NOTES**

- ① 45° DROP CONNECTION  
PROPOSED 1"-4" PVC SCH-40 SEWER @ 2.00%  
45° BEND  
PROPOSED 30"-4" PVC SCH-40 SEWER @ 2.00%  
PROPOSED 4" SANITARY SEWER CLEAN-OUT  
RIM 333.05  
FL 326.65  
1"-6" SANITARY SEWER LEAD  
PLUG SANITARY SEWER, CONNECTION TO BUILDING BY MEP ENGINEER
- ② 45° DROP CONNECTION  
PROPOSED 34"-4" PVC SCH-40 SEWER @ 2.00%  
45° BEND  
PROPOSED 76"-4" PVC SCH-40 SEWER @ 2.00%  
PROPOSED 4" SANITARY SEWER CLEAN-OUT  
RIM 335.00  
FL 328.20  
1"-6" SANITARY SEWER LEAD  
PLUG SANITARY SEWER, CONNECTION TO BUILDING BY MEP ENGINEER

**KEYED PLAN NOTES**

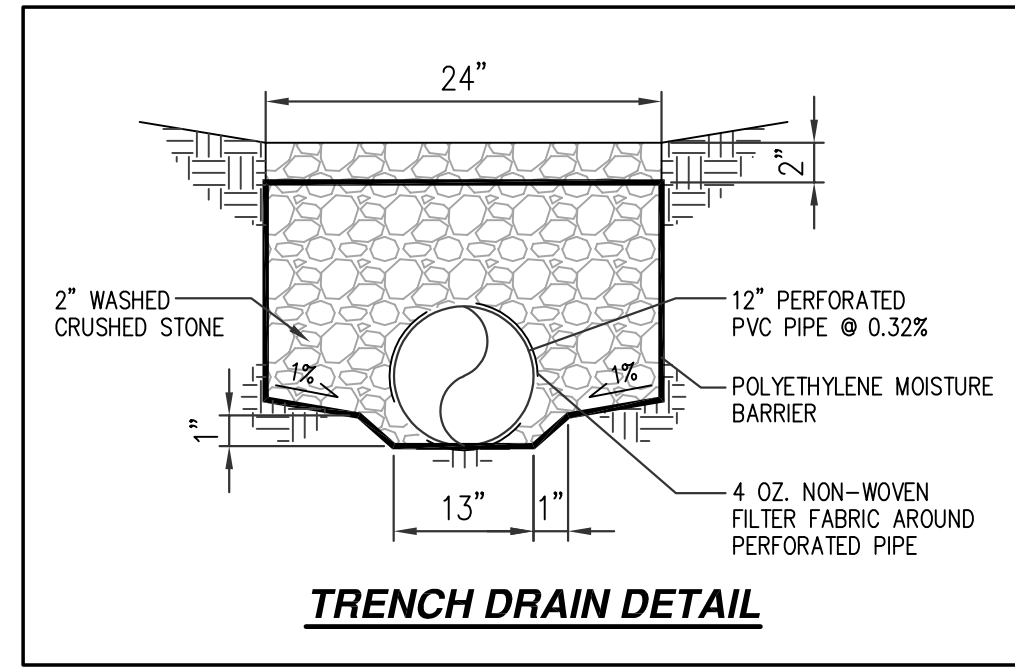
- ① STORM SEWER LINE - WATER LINE  
LINE CROSSING MINIMUM 2' SEPARATION
- ② SANITARY SEWER LINE - WATER LINE  
LINE CROSSING MINIMUM 2' SEPARATION

**WATER NOTE:**

WATER SERVICES WILL MAKE THE TAPS FOR THE SMALLER LINES.

**KEYED PLAN NOTES**

- ① 45° BEND  
PROPOSED 2"-12" HDPE @ 0.32%  
45° BEND
- ② PROPOSED 135"-12" HDPE @ 0.32%
- ③ PROPOSED 26"-12" HDPE @ 0.32%  
PLUS STORM SEWER  
BUILDING DOWNSPOUTS SHALL BE CONNECTED TO THIS STM SWR LINE
- ④ TRENCH DRAIN  
RE. DETAIL THIS SHEET
- ⑤ PROP. CB-12  
RIM 334.50  
FL 331.00
- ⑥ PROPOSED 44"-10" HDPE @ 0.40%
- ⑦ PROP. CB-12  
RIM 334.50  
FL 330.85
- ⑧ PROPOSED 11"-12" HDPE @ 0.32%  
45° BEND  
PROPOSED 4"-12" HDPE @ 0.32%  
45° BEND  
PROPOSED 9"-12" HDPE @ 0.32%



**WATER KEYED PLAN NOTES**

- ① 8"x2" TAPPING SADDLE WITH CORPORATION STOP  
9"-2" PVC SCH-40 DOMESTIC WATER LINE  
PROPOSED 2" WATER METER ASSEMBLY
- ② 14"-2" PVC SCH-40 DOMESTIC WATER LINE  
PROPOSED 2" RPZ BACKFLOW PREVENTOR  
51"-2" PVC SCH-40 DOMESTIC WATER LINE
- ③ 45° BEND  
81"-2" PVC SCH-40 DOMESTIC WATER LINE  
PLUG WATER LINE, CONNECTION TO BUILDING BY MEP ENGINEER
- ④ 14"-2" PVC SCH-40 DOMESTIC WATER LINE  
PROPOSED 2" RPZ BACKFLOW PREVENTOR  
31"-2" PVC SCH-40 DOMESTIC WATER LINE  
11.25' BEND  
1"-2" PVC SCH-40 DOMESTIC WATER LINE  
45° BEND  
74"-2" PVC SCH-40 DOMESTIC WATER LINE  
PLUG WATER LINE, CONNECTION TO BUILDING BY MEP ENGINEER
- ⑤ 8"x6" CUT IN TEE W/ 6" VALVE  
THE 6" VALVE SHALL HAVE A LOCKING LID ON THE VALVE COVER.  
25"-6" C-900 DR-18 FIRE WATER LINE  
PROPOSED DOUBLE CHECK VALVE BFF WITH UN-METERED BY-PASS  
LOW FLOW DETECTOR  
WITH FIRE DEPARTMENT CONNECTION  
67"-6" FIRE WATER LINE  
90° BEND  
28"-6" FIRE WATER LINE  
11.25' BEND  
77"-6" FIRE WATER LINE  
90° BEND  
5'-6" FIRE WATER LINE  
PLUG FIRE WATER LINE, CONNECTION TO BUILDING BY MEP ENGINEER
- ⑥ 6"x6"x6" TEE FITTING  
77"-6" FIRE WATER LINE  
90° BEND  
6'-6" FIRE WATER LINE  
90° BEND  
2'-6" FIRE WATER LINE  
PLUG FIRE WATER LINE, CONNECTION TO BUILDING BY MEP ENGINEER
- ⑦ 8"x4" TAPPING SADDLE WITH CORPORATION STOP  
9"-1" PVC SCH-40 IRRIGATION WATER LINE  
PROPOSED 1" WATER METER ASSEMBLY  
14"-1" PVC SCH-40 IRRIGATION WATER LINE  
PROPOSED 1" RPZ BACKFLOW PREVENTOR  
1'-1" PVC SCH-40 IRRIGATION WATER LINE  
PLUG IRRIGATION WATER LINE

**NOTE**  
PER TABLE 705.5 OF THE 2021 IBC ANY EXTERIOR WALL WITHIN 10' OF THE PROPERTY LINE NEEDS TO BE ONE HOUR RATED.

**NOTE**  
THE SCOPE OF THESE PLANS IS STRICTLY LIMITED TO CIVIL SITE WORK AND INFRASTRUCTURE DESIGN. COMPLIANCE WITH CODES AND REGULATIONS RELATED TO THE DESIGN OF IMPROVEMENTS INSIDE THE BUILDING ENVELOPE ARE NOT WITHIN THE SCOPE OF RSG ENGINEERING. BUILDING CODE COMPLIANCE IS NOT THE RESPONSIBILITY OF RSG ENGINEERING.

**LEGAL DESCRIPTION**  
1.753 ACRES OF LAND, BEING LOT 2B OF BRIAR MEADOWS CREEK SUBDIVISION, PHASE III, SITUATED IN THE JOHN AUSTIN LEAGUE, ABSTRACT 2, CITY OF BRYAN, BRAZOS COUNTY, TEXAS.

**GRADING NOTE:**  
CROSS SLOPES SHALL NOT EXCEED 2.00% THROUGH CROSS-WALK AND ADA PARKING SPOTS.

**OWNER CONTACT INFORMATION:**  
OWNERS NAME: SHOPS ON NASH LLC  
PHONE NUMBER: 832-922-8839

**BENCHMARK DATA**  
BENCHMARK NOTES  
COB OPS-33  
BRASS DISK STAMPED OPS-33 LOCATED ON NORTH SIDE OF W.J. BRYAN PKWY, APPROX. 74' NORTHWEST OF CENTER TO DRIVE ENTRANCE OF CHURCH WITH PROPERTY ADDRESS: 2122 W.J. BRYAN PKWY, APPROX. 25' NORTH OF W.J. BRYAN R.O.W., 31.7' EAST OF CONC. POWER POLE AND 22.8' WEST OF POWER POLE.  
ELEV. 339.05 NAVG88

**FLOODPLAIN DATA**  
SURVEYED PROPERTY LIES IN UNSHARED ZONE X ACCORDING TO FLOOD INSURANCE RATE MAP FOR BRAZOS COUNTY INCORPORATED AREAS, MAP NUMBER 480102020F, DATED EFFECTIVE 04/02/2014.

**BUILDING PURPOSE:**  
BUILDING PURPOSE: SHOPPING CENTERS

**NOTE**  
THE BUILDINGS WILL BE AT LEAST 50% NON-METALLIC.

CURVE CHART					
CURVE	RADIUS	DELTA	LENGTH	BEARING	CHORD
C1	615.00'	24°42'07"	265.14'	N 26°06'38" E	263.10'

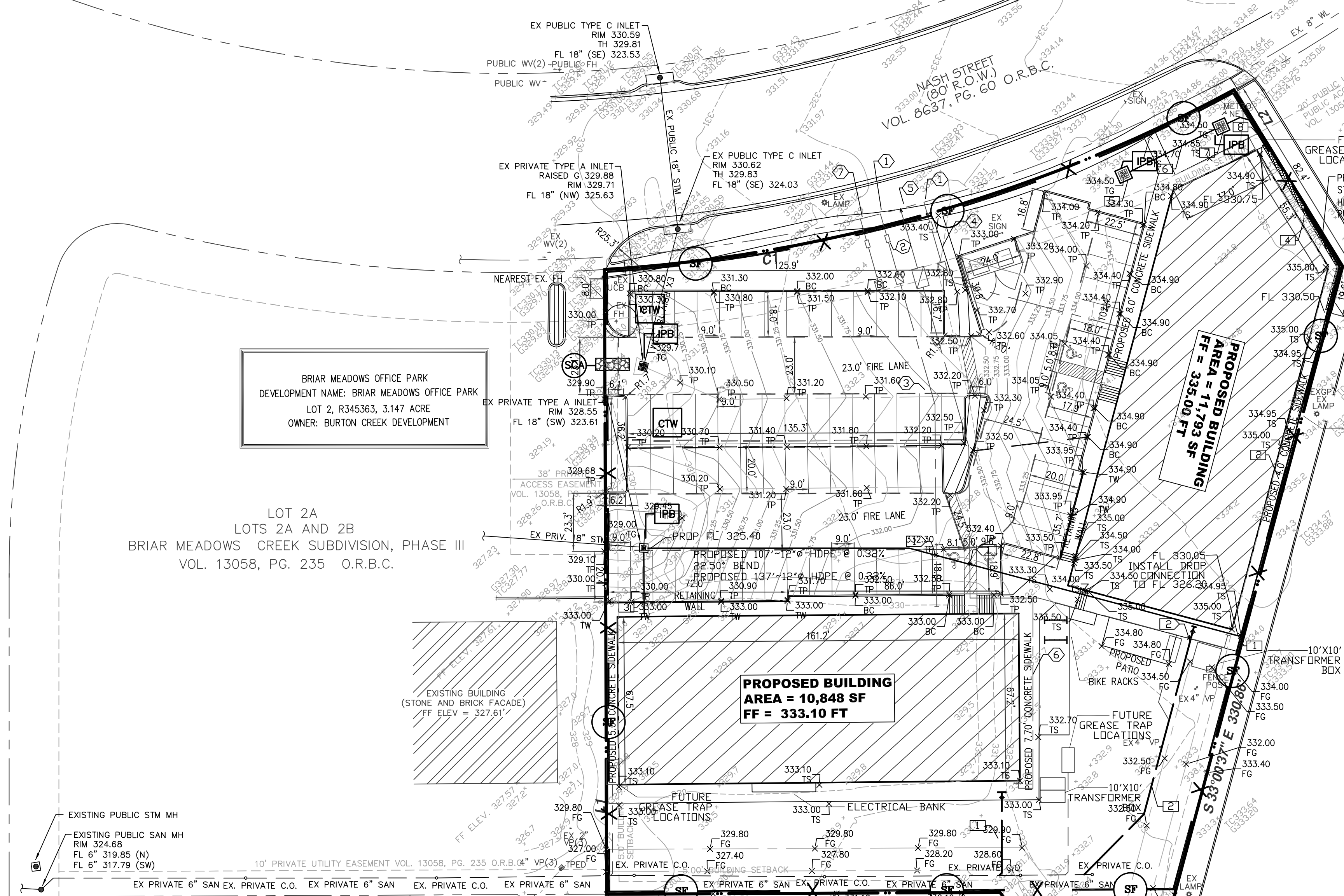
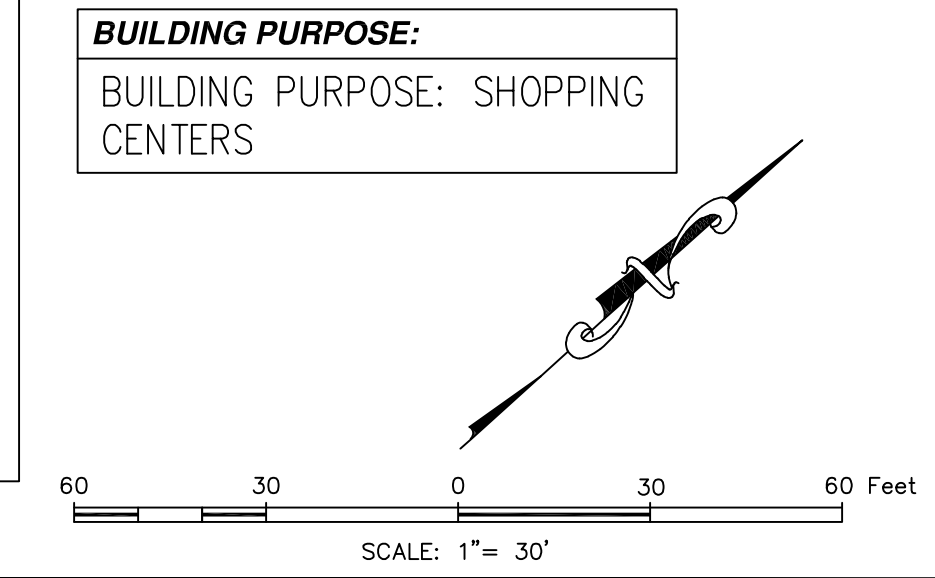
LINE CHART		
LINE	LENGTH	BEARING
L1	251.07'	N 48°09'05" W
L2	83.27'	S 79°27'20" E

**SIGNAGE NOTE:**  
NO SIGNS ARE BEING PROPOSED. IF SIGNAGE WILL BE PROPOSED THEN ALL SIGNAGE TO BE PERMITTED SEPARATELY.

**NOTE**  
CURRENT ZONING OF THE PROPERTY COMMERCIAL DISTRICT C-3

**PARKING ANALYSIS**  
REQUIRED PARKING SPACES:  
SHOPPING CENTERS, 1 SPACE PER 27F SF.  
  
GROSS FLOOR AREA: 22,641.00 SF  
PARKING SPACES REQUIRED: 82  
PARKING SPACES PROVIDED: 76

ADDITIONAL SPACES ALLOWED: 4  
SPACES FOR BICYCLE RACKS, 2  
SPACES FOR RIDE SHARING  
  
TOTAL SPACES: 82 PROVIDED



44 DUNLOP, DONNA	43 CRUSE, HORTENSE	42 JONES, MICHAEL & JERI L	41 KELLER, ROBERT F. & JANICE M	40 JIM VICKERS AND MARIE VICKERS VOL. 8133, PG. 293 O.R.B.C.	39 BILLY D. RAY AND GERALDINE L. RAY VOL. 10781, PG. 225 O.R.B.C.	JEAN A. MADSEN 38 VOL. 9100, PG 274 O.R.B.C.	BONNIE LUE 37 NUCHE VOL. 8749, PG. 68 O.R.B.C.
------------------------	--------------------------	-------------------------------------	---------------------------------------	---	---	---	---

BRIAR MEADOWS SUBDIVISION  
VOL. 6866, PG. 28 O.R.B.C.

BRIAR MEADOWS OFFICE PARK  
DEVELOPMENT NAME: BRIAR MEADOWS OFFICE PARK  
LOT 2, R345363, 3.147 ACRE  
OWNER: BURTON CREEK DEVELOPMENT

LOT 2A  
LOTS 2A AND 2B  
BRIAR MEADOWS CREEK SUBDIVISION, PHASE III  
VOL. 13058, PG. 235 O.R.B.C.

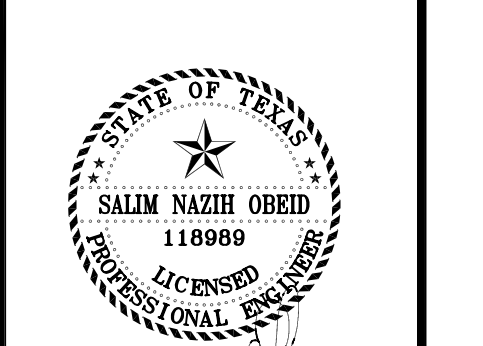
BROADMOOR DRIVE  
B.C.C.D. 2015-1249602

**RSG ENGINEERING**  
13501 KATY FREEWAY  
SUITE 3160  
HOUSTON, TEXAS 77079  
PH. 713-765-7777

project  
**NASH ST RETAIL CENTER**  
at  
2785 NASH ST  
BRYAN, TEXAS 77802

REVISIONS

NO.	DATE	DESCRIPTION



10.30.2024

**SITE PLAN**

<b>DRAWN BY:</b> CM	<b>CHECKED:</b> SNO
<b>PROJECT No:</b> 23322.13	<b>SHEET No:</b> C2.1